

# Errata: Intensity Measure Correlations Observed in the NGA-West2 Database, and Dependence of Correlations on Rupture and Site Parameters

Jack W. Baker and Brendon A. Bradley

August 26, 2022

The original version of the following paper was produced using some incorrect values for  $Z_{1.0}$  values and earthquake regions, in the ground motion database.

Baker, J. W., and Bradley, B. A. (2017). “Intensity measure correlations observed in the NGA-West2 database, and dependence of correlations on rupture and site parameters.” *Earthquake Spectra*, 33(1), 145-156. <https://doi.org/10.1193/060716eqs095m>

This error resulted in some incorrect predictions of ground motion intensity measures, and thus incorrect correlations of prediction residuals. The following figures show the original as-published figures, followed by the figures with the error resolved. The calculations and data at [https://github.com/bakerjw/NGAW2\\_correlations](https://github.com/bakerjw/NGAW2_correlations) are corrected to resolve this error.

## Acknowledgements

We thank Eduardo Miranda and Alan Poulos for detecting this problem and finding a resolution.

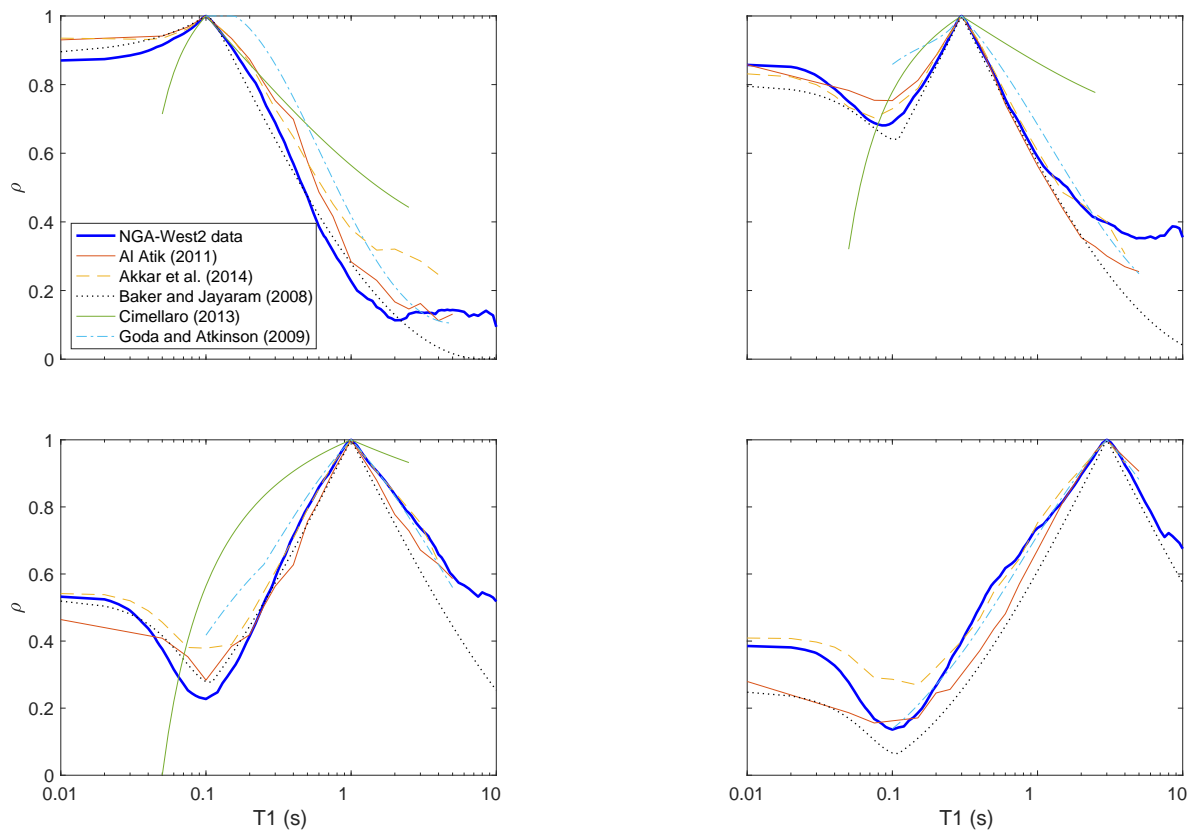


Figure 1: Original paper Figure 1

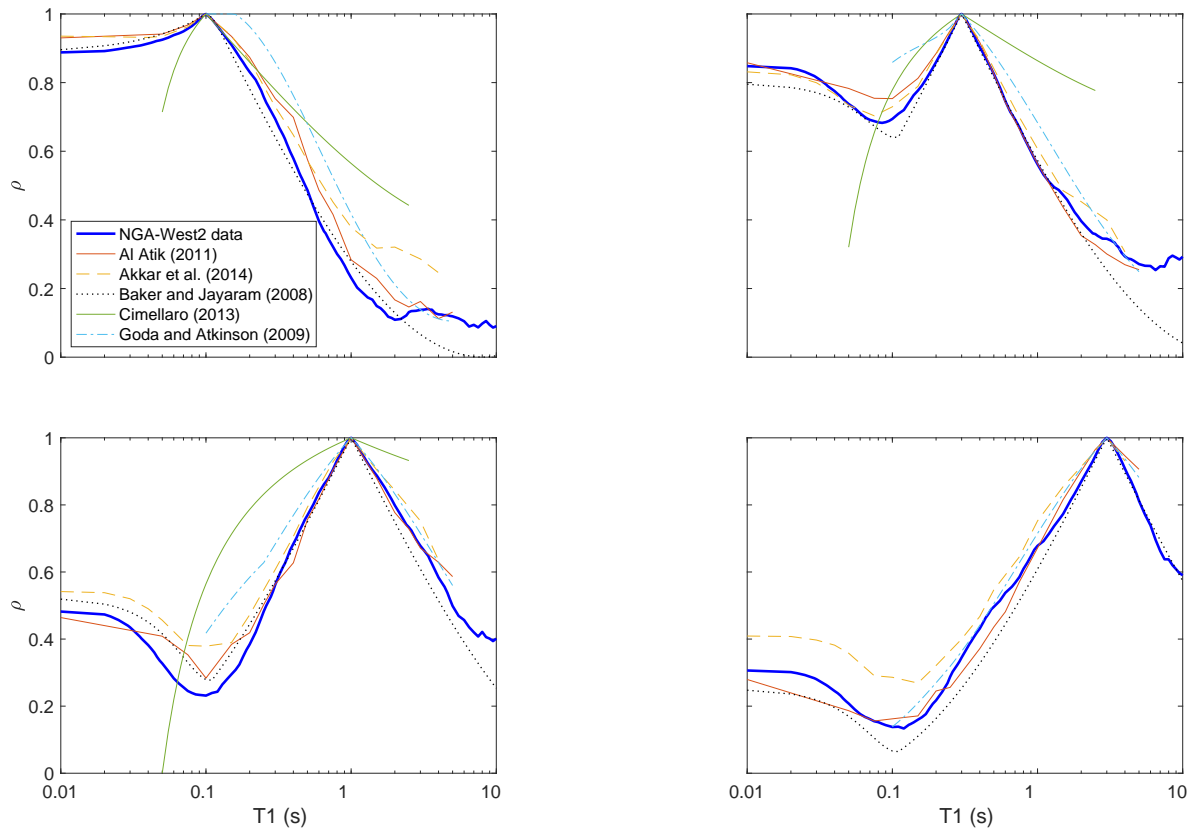


Figure 2: Updated paper Figure 1

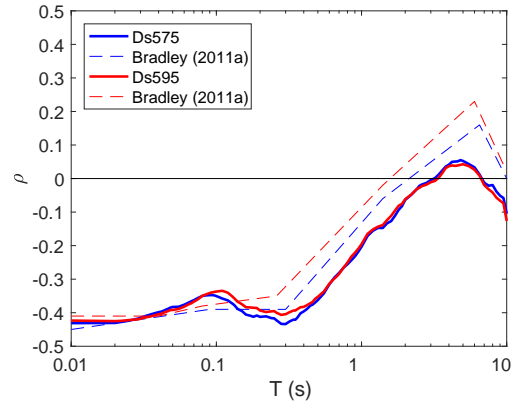
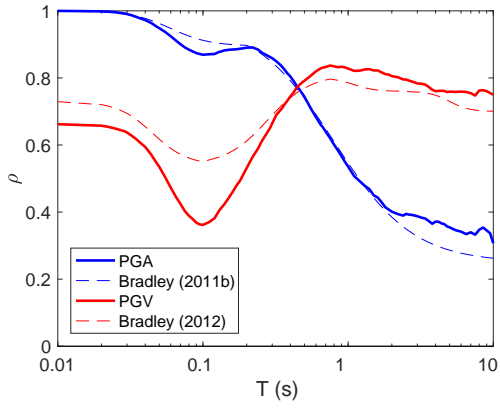


Figure 3: Original paper Figure 2

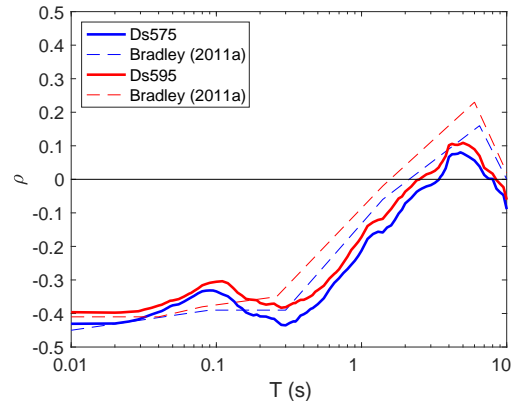
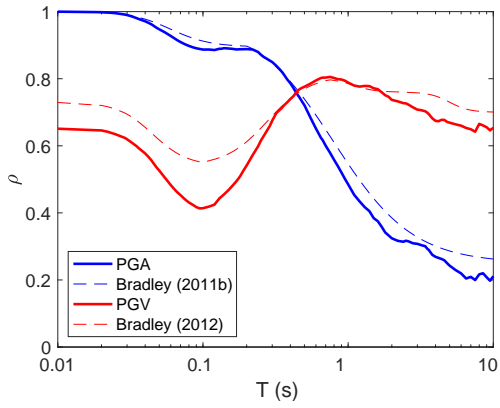
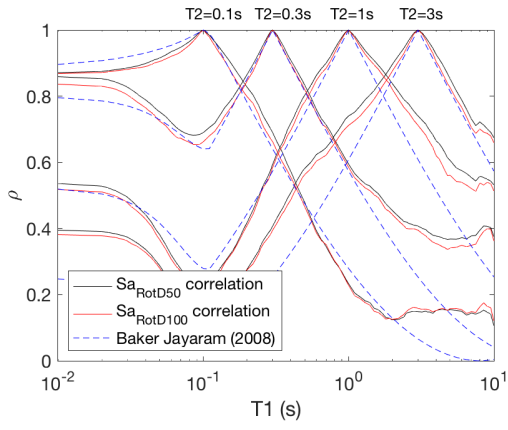
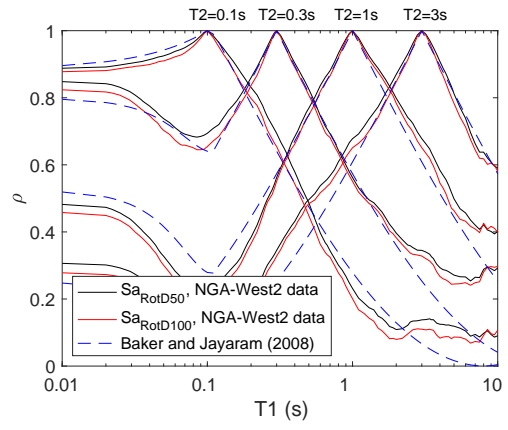


Figure 4: Updated paper Figure 2

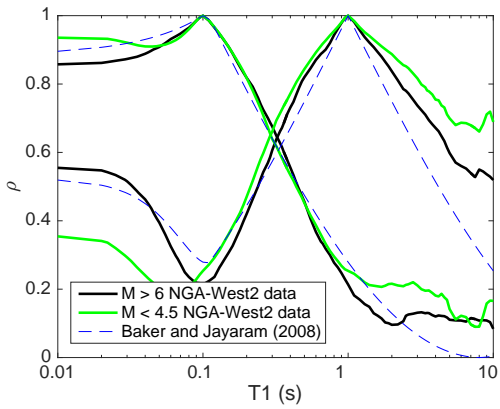


(a) Original

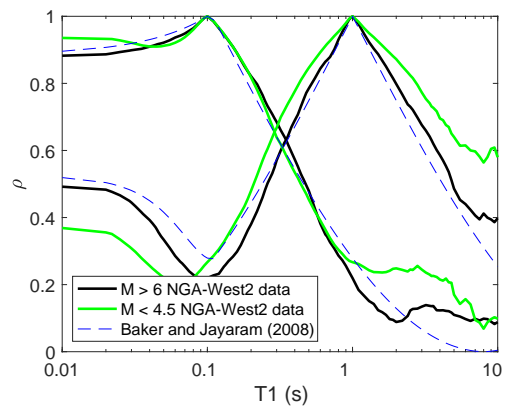


(b) Updated

Figure 5: Paper Figure 3



(a) Original



(b) Updated

Figure 6: Paper Figure 4

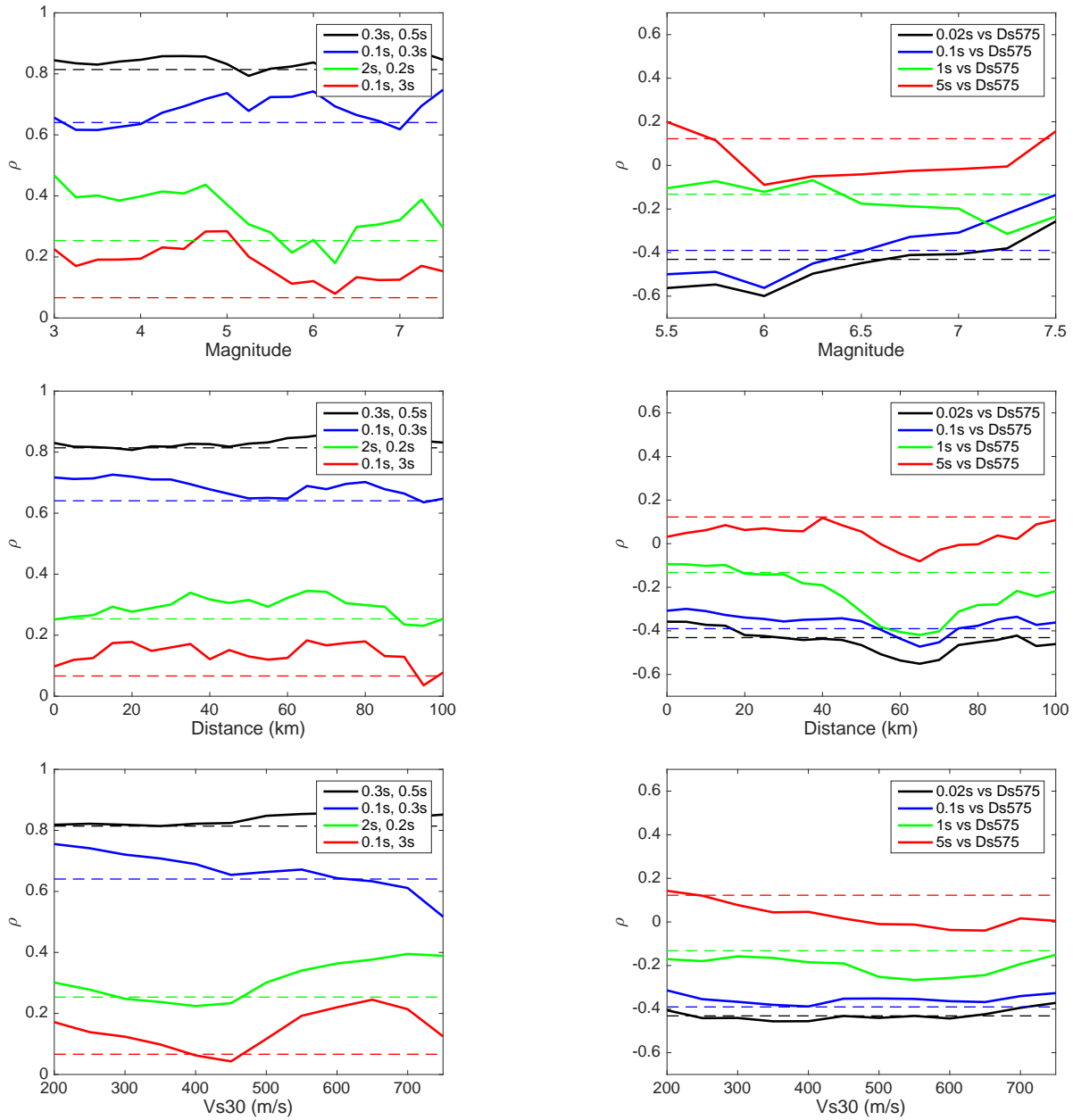


Figure 7: Original paper Figure 5

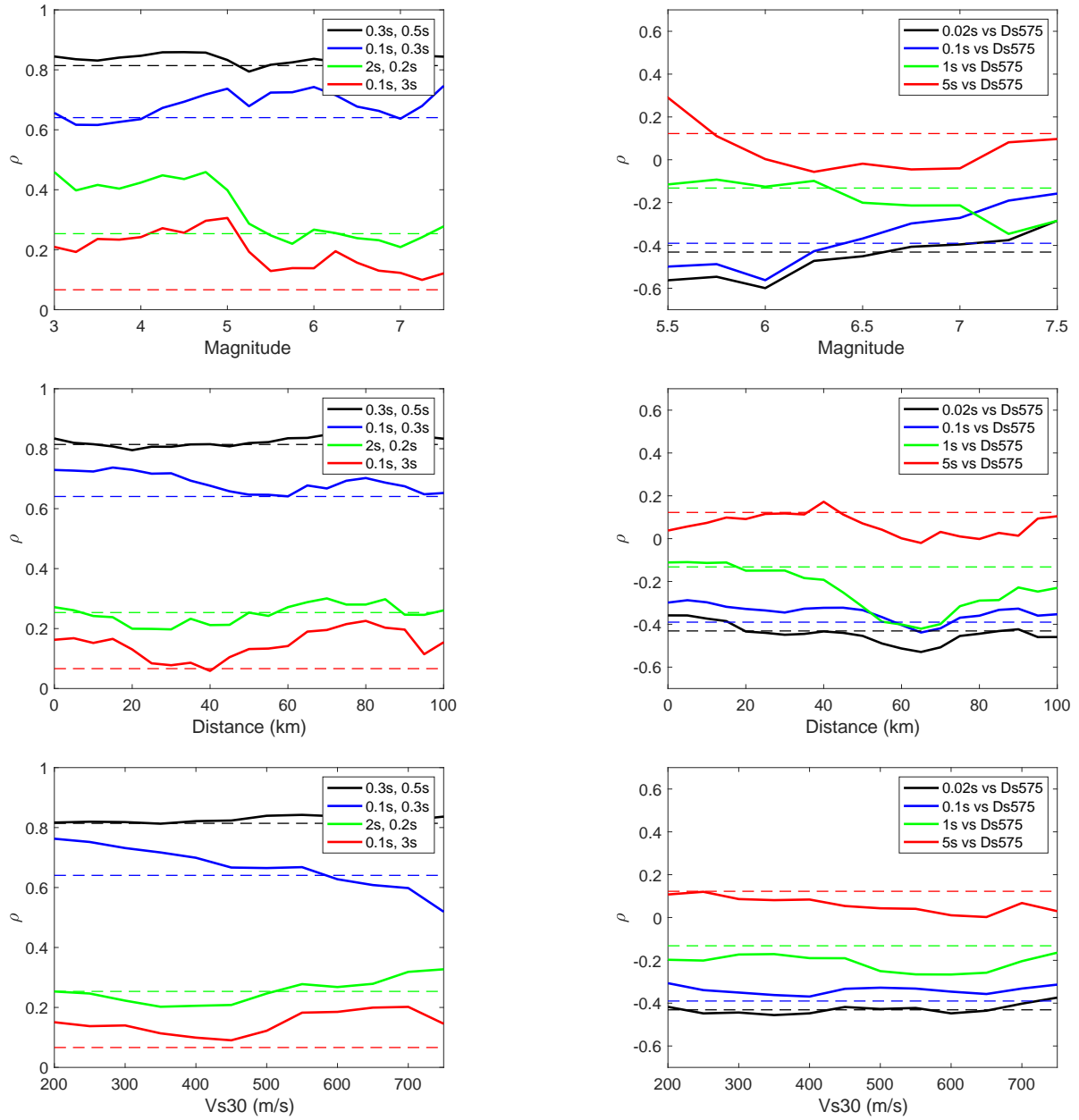


Figure 8: Updated paper Figure 5